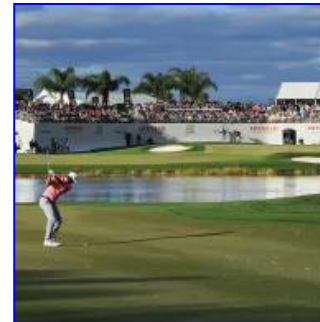




Monday After
Invitational at

**The
Honda
Classic**



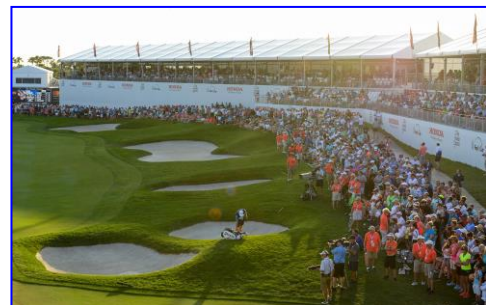
PGA National Resort and Spa The Champion Course

8:00am, Monday, February 26, 2018

Play where the Pros play!! The Champion Course will be set up in the same conditions with the same pin placements as the PGA TOUR's championship Sunday.

- EVENT FORMAT:** 18 Holes, Two Player – Best Ball Team Event. Play Your Own Ball (Not a scramble). Prizes will be awarded for Gross and Net Divisions. Special tee locations will be assigned for Seniors, Ladies and Juniors.
- TIME:** 7:15 Registration, warm-up and continental breakfast.
8:00am Shotgun Start. Limited Field to ensure a fast pace of play.
First come, first served. Please enter early to reserve your team, as this event will sell out in two weeks and a waiting list will be compiled thereafter.
- ENTRY FEE:** \$675.00 per person / \$1,350.00 per team. Entry fee must accompany application.
- INFORMATION:** Your tournament Entry Fee includes greens fee, cart, practice balls, continental breakfast, awards luncheon, gift bag and a tournament hospitality to The Honda Classic. Each team member receives one (1) Champions Club credential providing access to the Champions Club hospitality pavilion (which includes food and beverages) for one weekend day of their choice at The Honda Classic, plus one preferred parking pass. Each player also has the option to purchase one additional hospitality credential.

THE CHAMPIONS CLUB AT NICKLAUS VILLAGE: The Champions Club is an upscale, all-inclusive entertainment venue located on the 18th fairway of the Champion Course for The Honda Classic. This hospitality marquee features decor themed with insight into the Golden Bear's history, outdoor observation decks providing premium views and with high-end catering and full bar service.



- Champions Club amenities include:
- Climate controlled with unique furnishings, tables, wooden chairs, linens and wait staff
 - Multiple color televisions with in-tent coverage of The Honda Classic plus online scoring terminals
 - Complimentary copies of The Honda Classic Publications
 - Multiple upscale bar and buffet areas
 - Preferred parking pass

For additional information, please contact: Carl Mistretta at 561-307-4060 or carlm@thefirstteepalmbeaches.org

www.thefirstteepalmbeaches.org



Monday After Invitational at



PGA National Resort and Spa
The Champion Course

8:00am Monday, February 26, 2018

Please complete the following information and return with payment to the The First Tee of The Palm Beaches.

_____ \$1,350 – TEAM ENTRY FEE (Includes two Champions Club credentials to The Honda Classic)

_____ \$675 – INDIVIDUAL ENTRY FEE (Includes one Champions Club credential to The Honda Classic)

PLAYER 1: _____

HDCP INDEX: _____ EMAIL: _____

CHAMPIONS CLUB HOSPITALITY CREDENTIAL (circle one): SATURDAY / SUNDAY

_____ I WOULD LIKE TO PURCHASE AN ADDITIONAL CHAMPIONS CLUB CREDENTIAL FOR \$275

PLAYER 2: _____

HDCP INDEX: _____ EMAIL: _____

CHAMPIONS CLUB HOSPITALITY CREDENTIAL (circle one): SATURDAY / SUNDAY

_____ I WOULD LIKE TO PURCHASE AN ADDITIONAL CHAMPIONS CLUB CREDENTIAL FOR \$275

Please make checks payable and remit to: The First Tee of the Palm Beaches
7301 N. Haverhill Rd.
West Palm Beach, FL 33407

Credit Card applications may be faxed to the First Tee of The Palm Beaches at 561-275-2050.

NAME ON CARD: _____ CARD NUMBER: _____

EXPIRATION: _____ SECURITY CODE: _____ (AMEX ON FRONT)

TOTAL CHARGE ON CREDIT CARD: \$ _____

In consideration for the acceptance of my tournament entry, I, for my heirs, executors, successors and administrators, release and forever discharge the The First Tee of the Palm Beaches, The Honda Classic and PGA National Resort & Spa (The "Parties") and all of the Parties' sponsors and the sponsor's employees, officers, directors, agents, representatives, successors and assigns of all liabilities, claims actions, damages, costs or expenses, including attorney's fees, known or unknown, which I may have against them arising out of or in any way related to my participation in or presence at this tournament, including travel to or from this tournament. I understand that this release includes any and all claims, including but not limited to those based on negligence, action or inaction of any of the above described parties.

Signature: _____ Date: _____